

CHEMICAL SYMBOLS

BONDS:

—	Single bond	} Bond length: 10pt Stroke Weight: 0.5pt Gap between double & triple bonds: 1.75pt	---	Dashed & dotted single bonds
=	Double bond		—	—	Solid wedge bonds
≡	Triple bond		Dashed wedge bonds

↔ Symbol shows that partial organic structure is bonded to an unspecified partial structure

— / | Angled bonds

VALENCE ELECTRON DOTS:



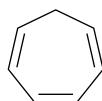
POLYGONS:



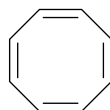
Benzenes



Pentagons

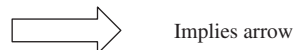
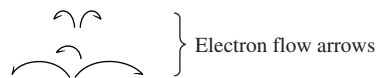
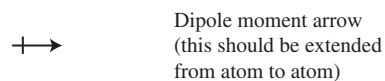
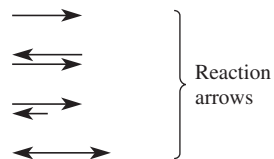


Heptagons

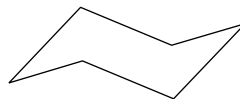


Octagons

ARROWS:



CYCLOHEXANE RING



BRACE AND BRACKET:

